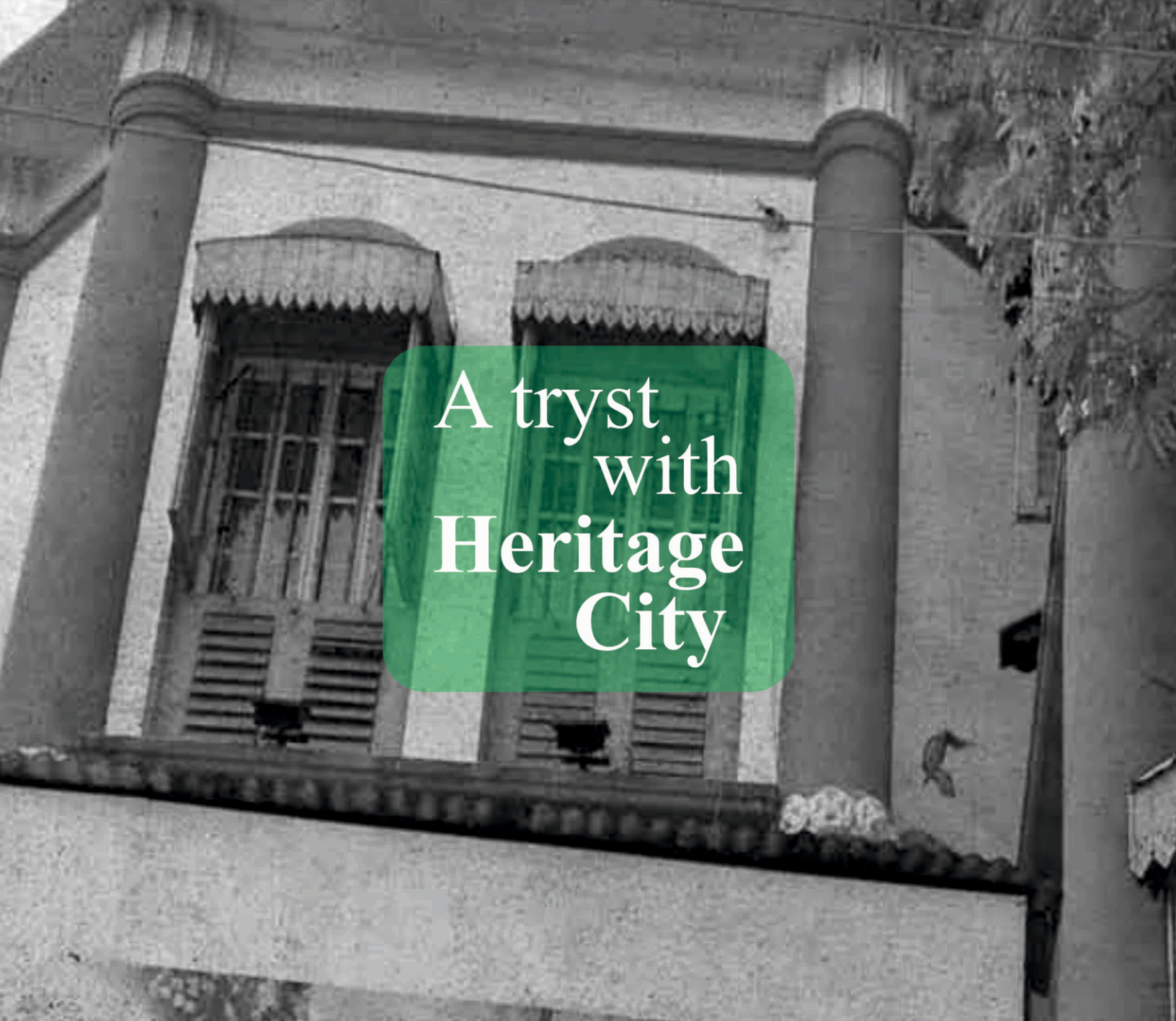


A tryst
with life



PURE
SONNET

PURE HAPPINESS AND BLISS



A tryst with Heritage City

Located at Kotalia in Harinavi towards the South of Garia and Ramkrishna Mission Narendrapur, Pure Sonnet is in close proximity of NETAJI SUBHASH CHANDRA BOSE'S HERITAGE HOME.

- It is well connected through bus routes and auto services besides private cabs.
- Walking distance to World Class Swarnim International School
- 5 minutes drive to Subhasgram Railway Station
- A quick auto ride to the nearest Metro Station 'Kavi Nazrul' is about 15 minutes.
- The Metro links the neighborhood to any part of the city on the North South Metro through the CBD areas of Kolkata.
- This project is barely minutes away from the ongoing E.M. Bypass Extension which will connect this locality to the IT Hubs & the Eastern corridor of Kolkata.



Netaji Subhash Chandra Bose's Heritage Home

SRG INFINITY DEVELOPER LTD. promoted by ARTTECH GROUP from Delhi NCR, has been an integral part of India's real estate landscape over the last two decades. Our group has truly perfected its craft and developed numerous landmark projects in Faridabad, Gurgaon, Palwal & now in Kolkatta.

The Group's forte has and continues to be luxury & affordable residential and commercial properties. In the recent decades we have also ventured into affordable housing in Faridabad promising quality lifestyles. Though the primary focus of the company is in creating a luxury lifestyle, we also focus on four other verticals: re-development, second homes, affordable luxury & corporate development. Each of these segments demand their own strategies.

Today, We pave the way forward with a vision to incorporate evolved architectural practices and develop projects that are both sustainable and secure. Aan integrated team of experts; enable the group to deliver on its commitment to quality and efficiency.

The Group is constantly adapting with the modern times while maintaining its values of excellence and purity set forth by the founder of the Group. It is his legacy, forged with conviction that makes the group uphold its tradition of excellence and purity!

THE PROJECT...



*Perspective view may vary

A tryst
with **happiness**

#Read Disclaimer

PURE SONNET

N.S.C. Bose Road, Near Lalbari, Harinavi, Kolkatta

1 BHK, 2 BHK & 3 BHK

TOTAL 53 APARTMENTS & SHOPS

SPREAD OVER

24 Katha (17280 Sqft)*

PURE AFFORDABLE HOMES

The design and build of PURE homes will feature clean lines, open spaces, sustainable designs low maintenance and modern amenities.

The quality of construction will be of absolutely high calibre and the finest designs and materials will be used to build these dream homes.

The vision for PURE will be **'Pure Living Born out of
PURE ETHICS, EXPERIENCE & EXPERTISE.'**





*Perspective view may vary

#Read Disclaimer

PURE SONNET



*Perspective view may vary

#Read Disclaimer



A tryst
with
Open Spaces

*Perspective view may vary

Eventually, it's all about space. Space you can call your own. These independent units are efficiently planned to offer you maximum Usable area. Each room is planned to ensure brightness and unhindered airflow. The design encompasses affordable living with elevators, open spaces, common areas, shopping etc. to provide a secure and comfortable experience.

THE AMENITIES...

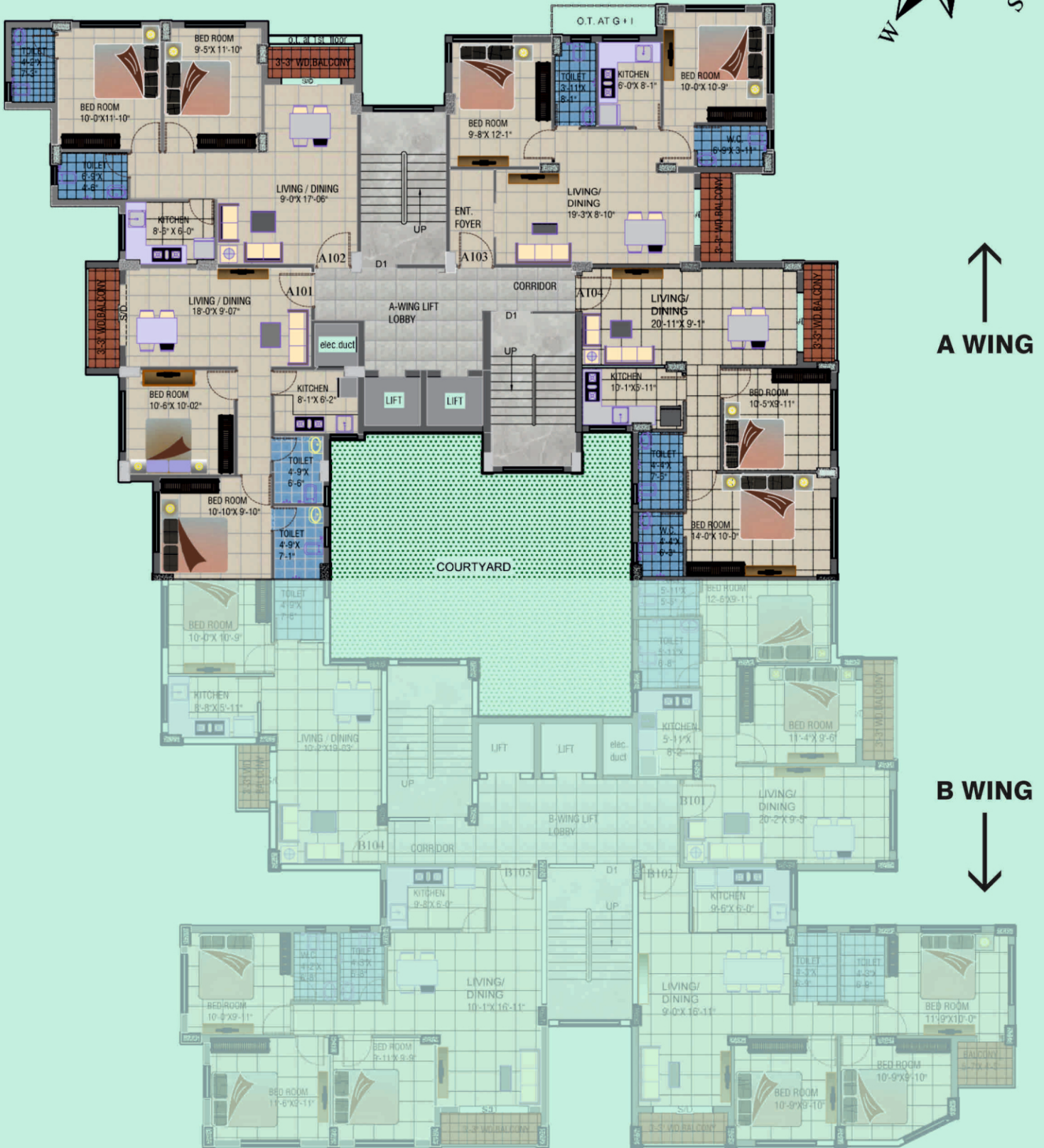
- Open space to ensure maximum comfort & security
- The buildings are oriented to maximum light & airflow, creating a cheerful environment for healthy living
- Bedrooms are cross ventilated
- Stilt / Open Parking
- Terrace Garden
- Community hall / Club with YOGA Deck
- Large courtyard on the ground floor with Kids Play Area
- Shopping with in the complex
- Fire fighting system
- Rain water harvesting
- Unique design of two separate lobbies of A wing & B Wing. Servicing 26 Flats in each wing. Pure luxury...



Owning a home is a dream come true for everyone. Moving into one's first house is an experience of

**PURE HAPPINESS
AND BLISS.**

FLOOR PLAN

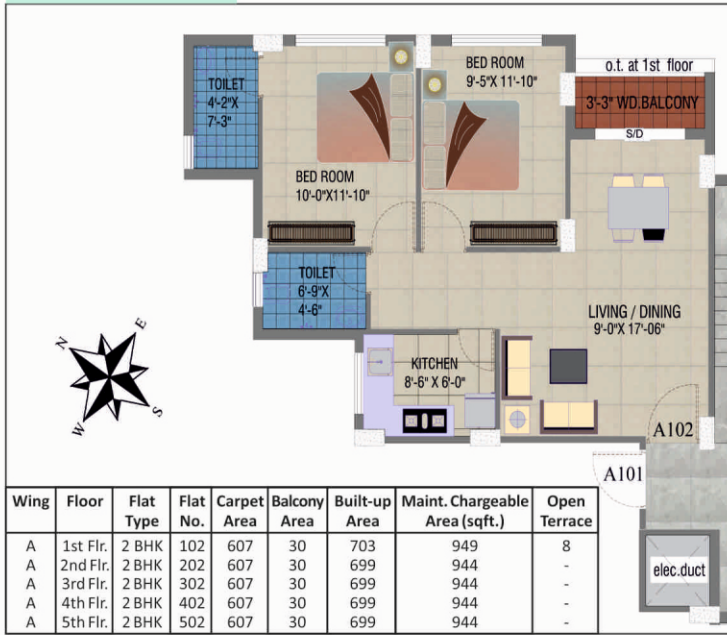


TYPICAL FLOOR LAYOUT PLAN
1st - 5th Floor

Layout Plans For 1st-5th Floor (A Wing)

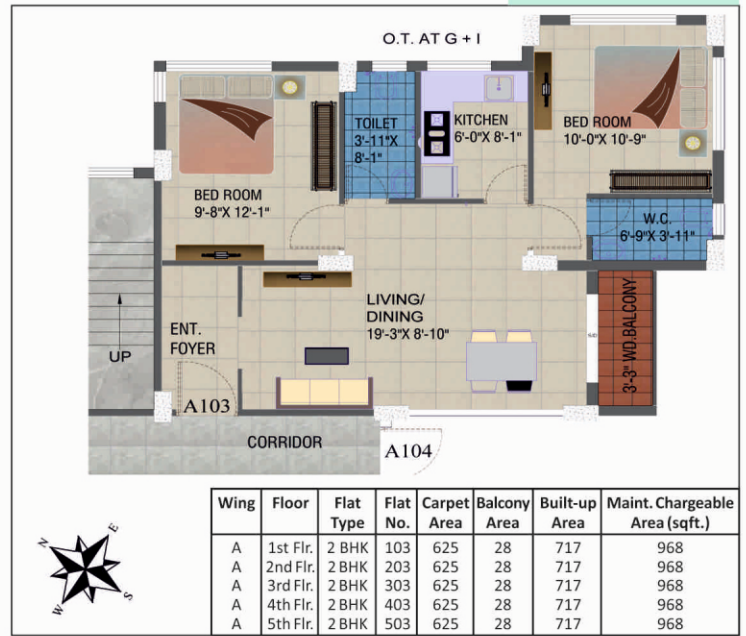
Typical Floor Plan

A 102 (1st-5th Same)



Typical Floor Plan

A 103 (1st-5th Same)



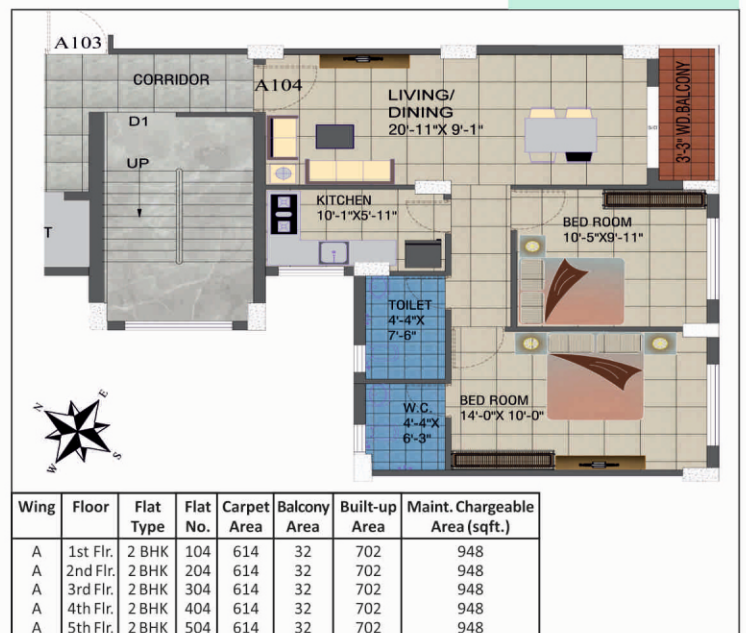
Typical Floor Plan

A 101 (1st-5th Same)

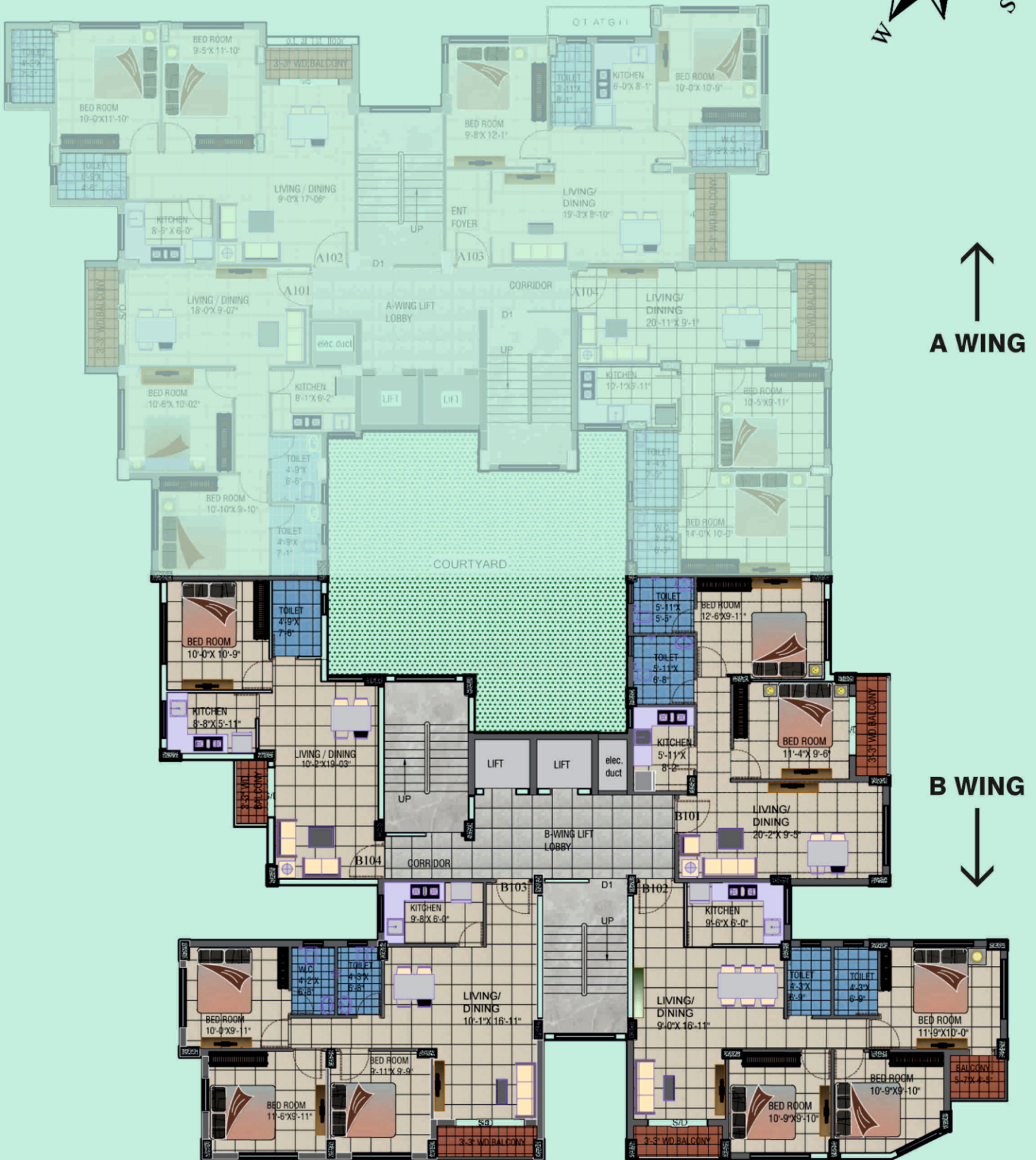
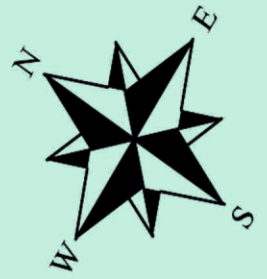


Typical Floor Plan

A 104 (1st-5th Same)



FLOOR PLAN

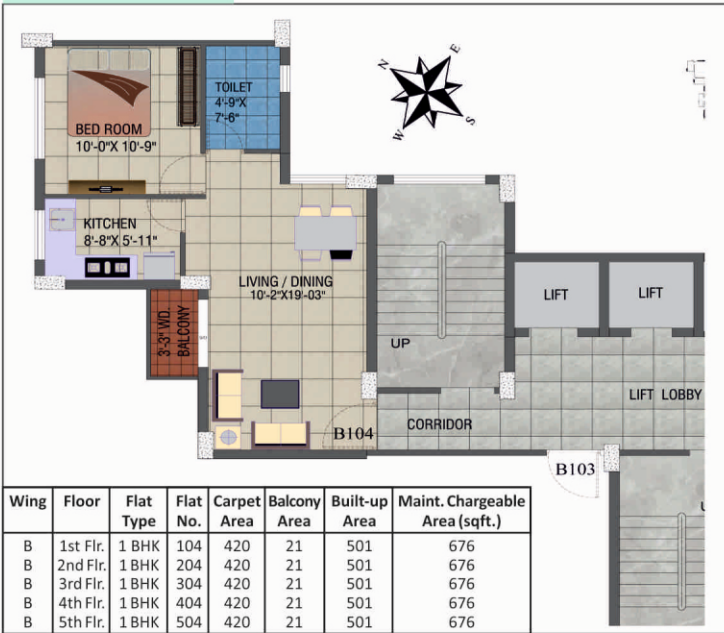


TYPICAL FLOOR LAYOUT PLAN
1st - 5th Floor

Layout Plans For 1st-5th Floor (B Wing)

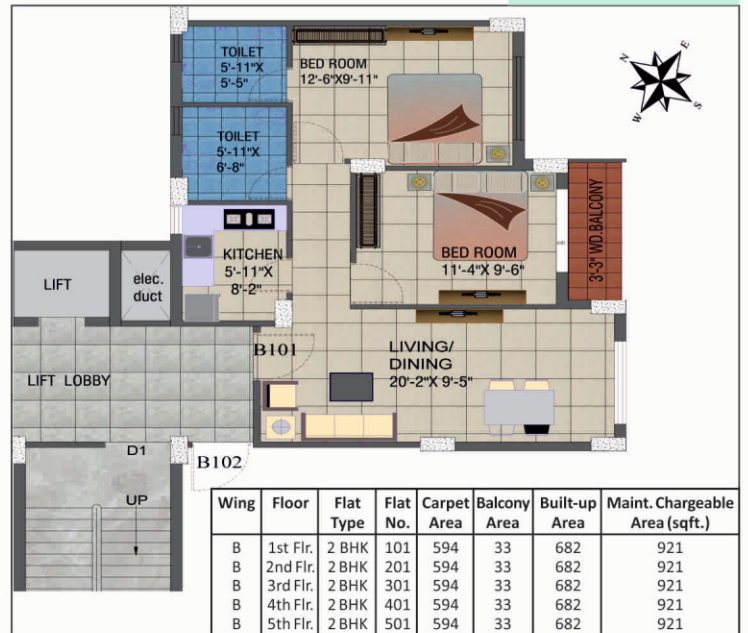
Typical Floor Plan

B 104 (1st-5th Same)



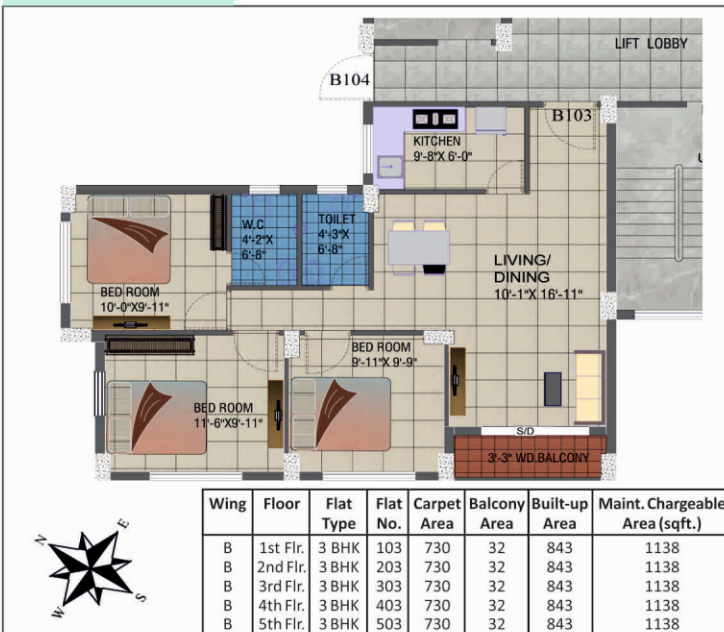
Typical Floor Plan

B 101 (1st-5th Same)



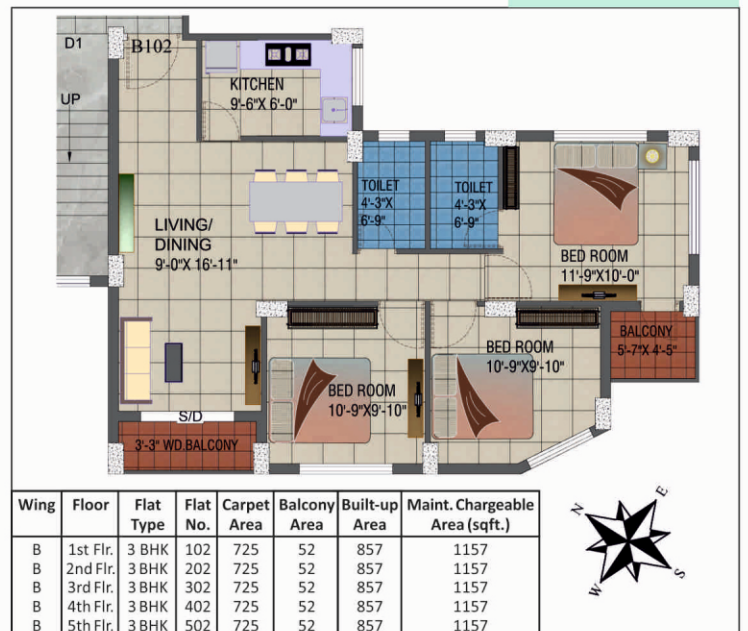
Typical Floor Plan

B 103 (1st-5th Same)

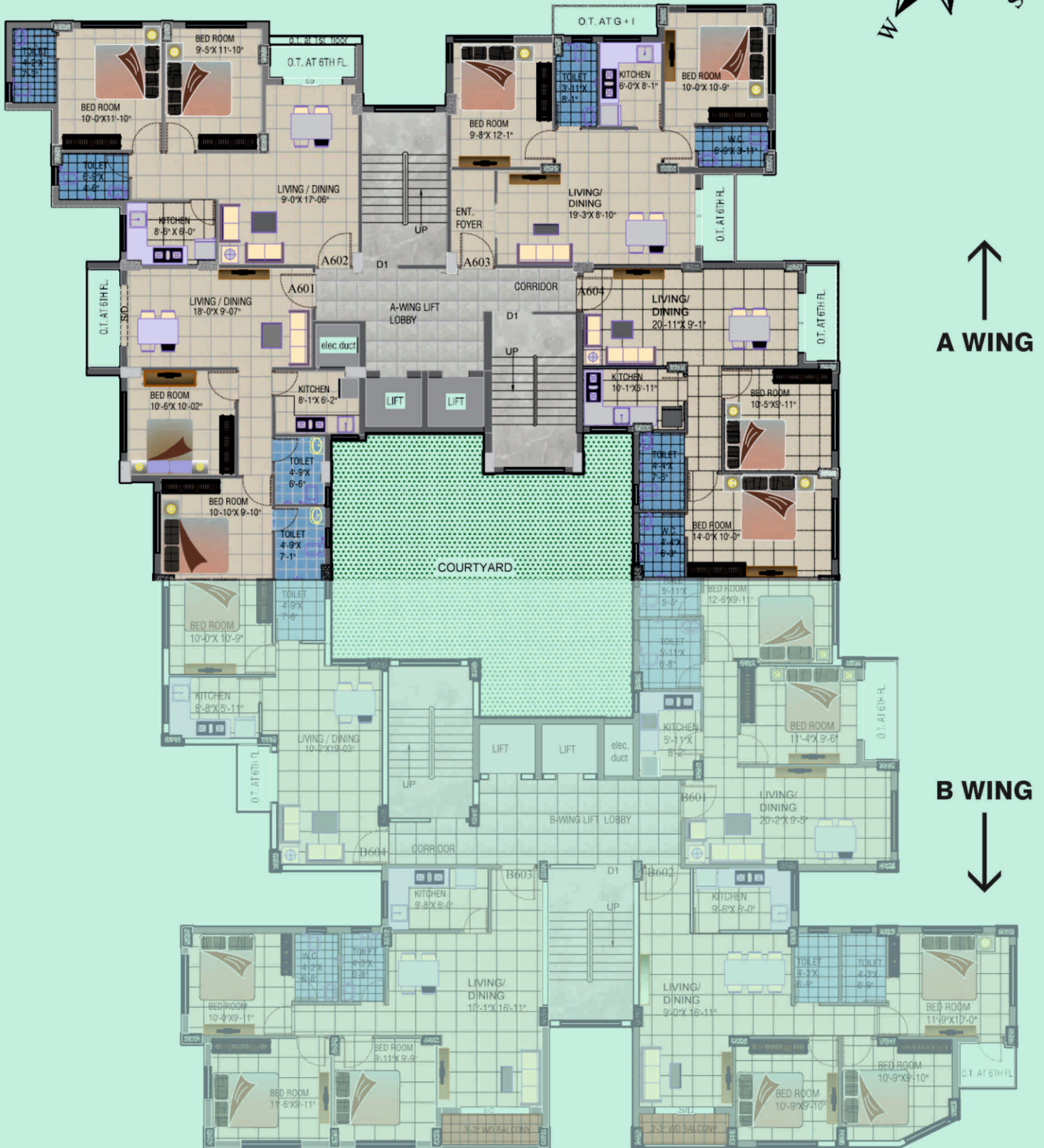
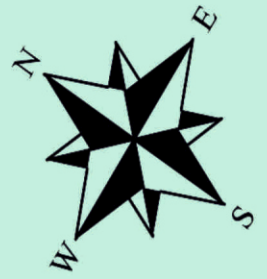


Typical Floor Plan

B 102 (1st-5th Same)



FLOOR PLAN



TYPICAL FLOOR LAYOUT PLAN
6th Floor

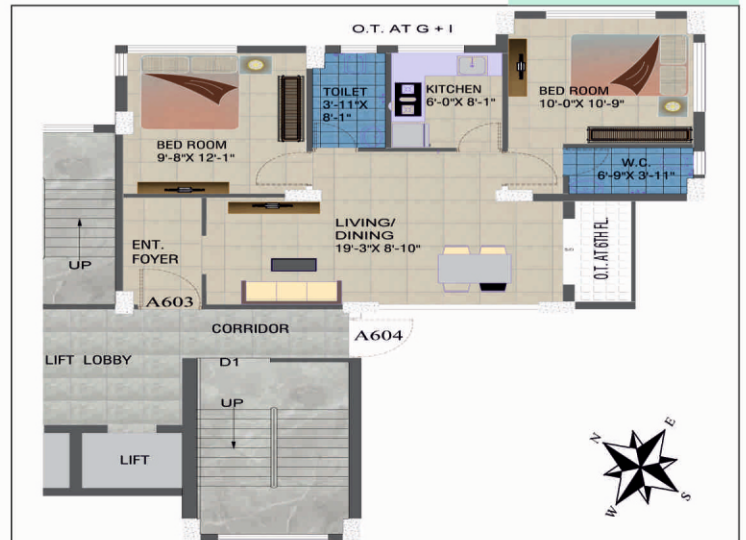
Layout Plans For 6th Floor (A Wing)

Typical Floor Plan
A 602 (6th Floor)



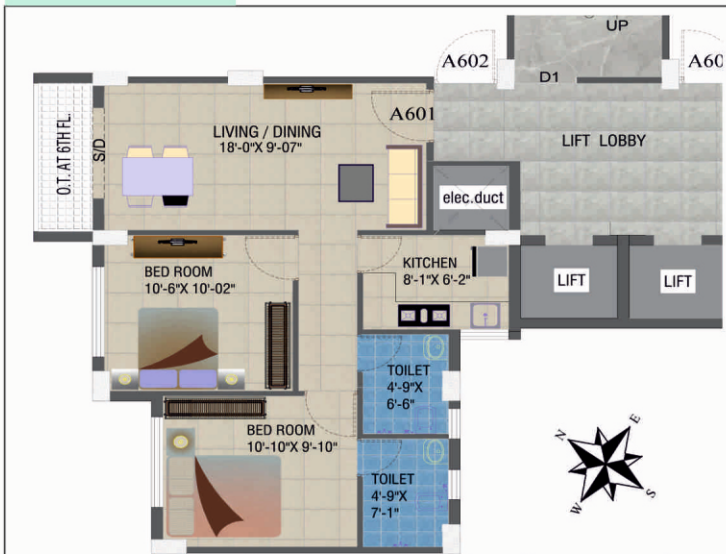
Wing	Floor	Flat Type	Flat No.	Carpet Area	Built-up Area	Maint. Chargeable Area (sqft.)	Open Terrace
A	6th Flr.	2 BHK	602	607	685	925	30

Typical Floor Plan
A 603 (6th Floor)



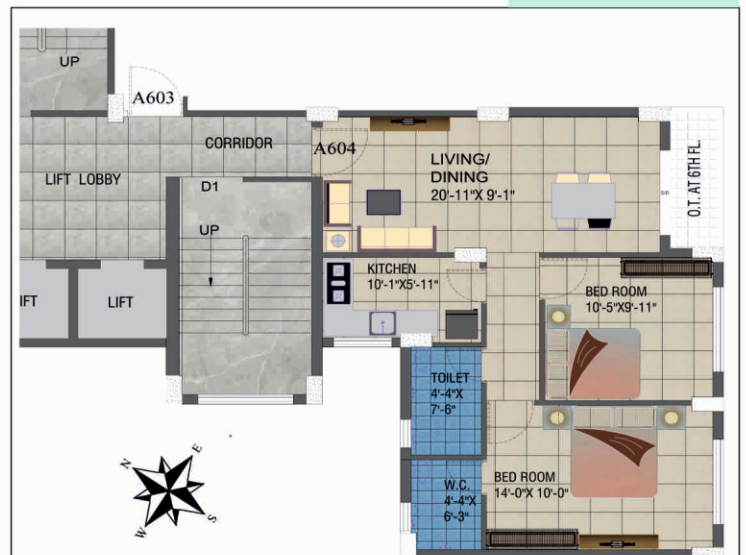
Wing	Floor	Flat Type	Flat No.	Carpet Area	Built-up Area	Maint. Chargeable Area (sqft.)	Open Terrace
A	6th Flr.	2 BHK	603	625	702	948	28

Typical Floor Plan
A 601 (6th Floor)



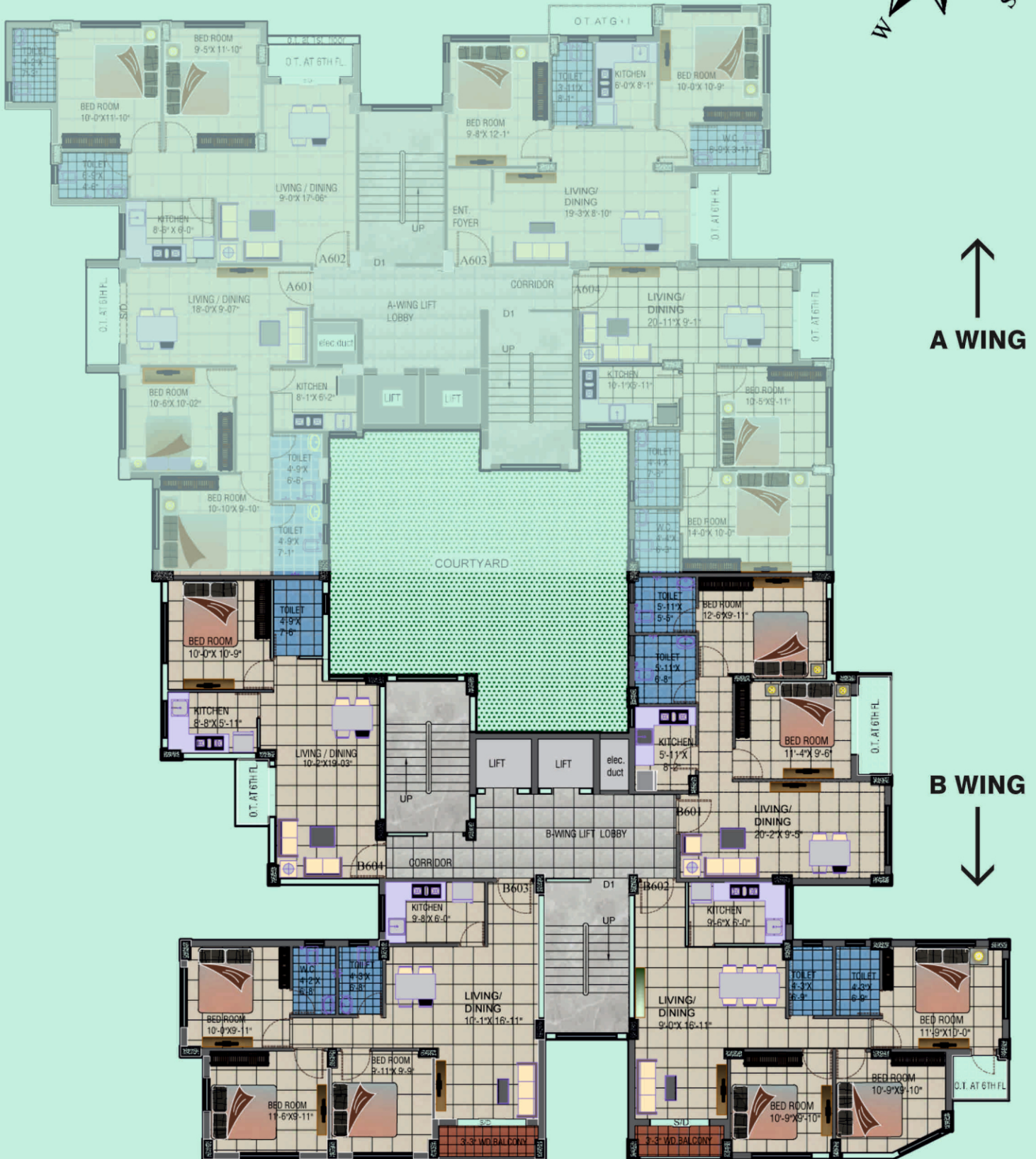
Wing	Floor	Flat Type	Flat No.	Carpet Area	Built-up Area	Maint. Chargeable Area (sqft.)	Open Terrace
A	6th Flr.	2 BHK	601	556	624	842	36

Typical Floor Plan
A 604 (6th Floor)



Wing	Floor	Flat Type	Flat No.	Carpet Area	Built-up Area	Maint. Chargeable Area (sqft.)	Open Terrace
A	6th Flr.	2 BHK	604	614	688	929	31

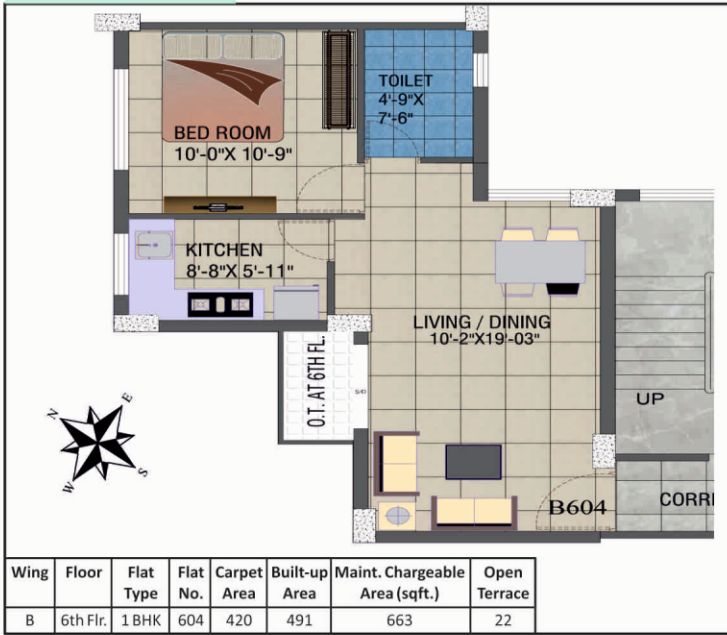
FLOOR PLAN



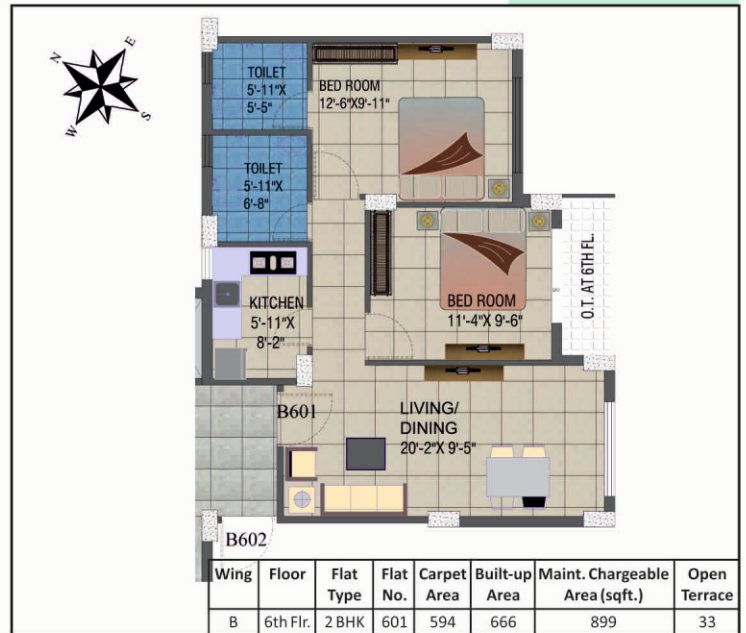
TYPICAL FLOOR LAYOUT PLAN
6th Floor

Layout Plans For 6th Floor (B Wing)

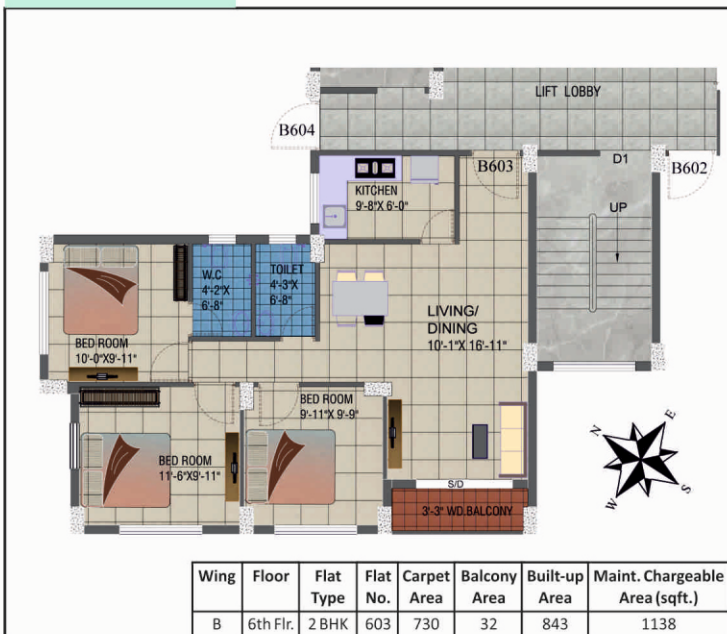
Typical Floor Plan
B 604 (6th Floor)



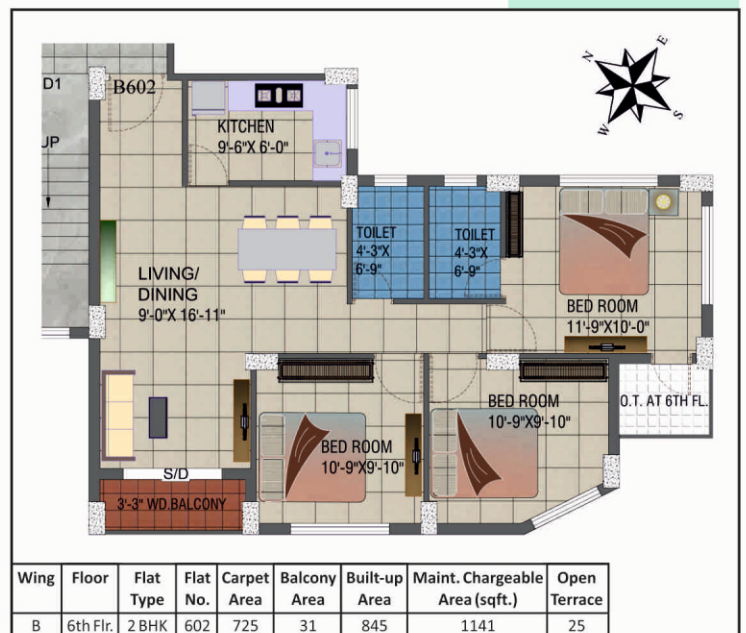
Typical Floor Plan
B 601 (6th Floor)



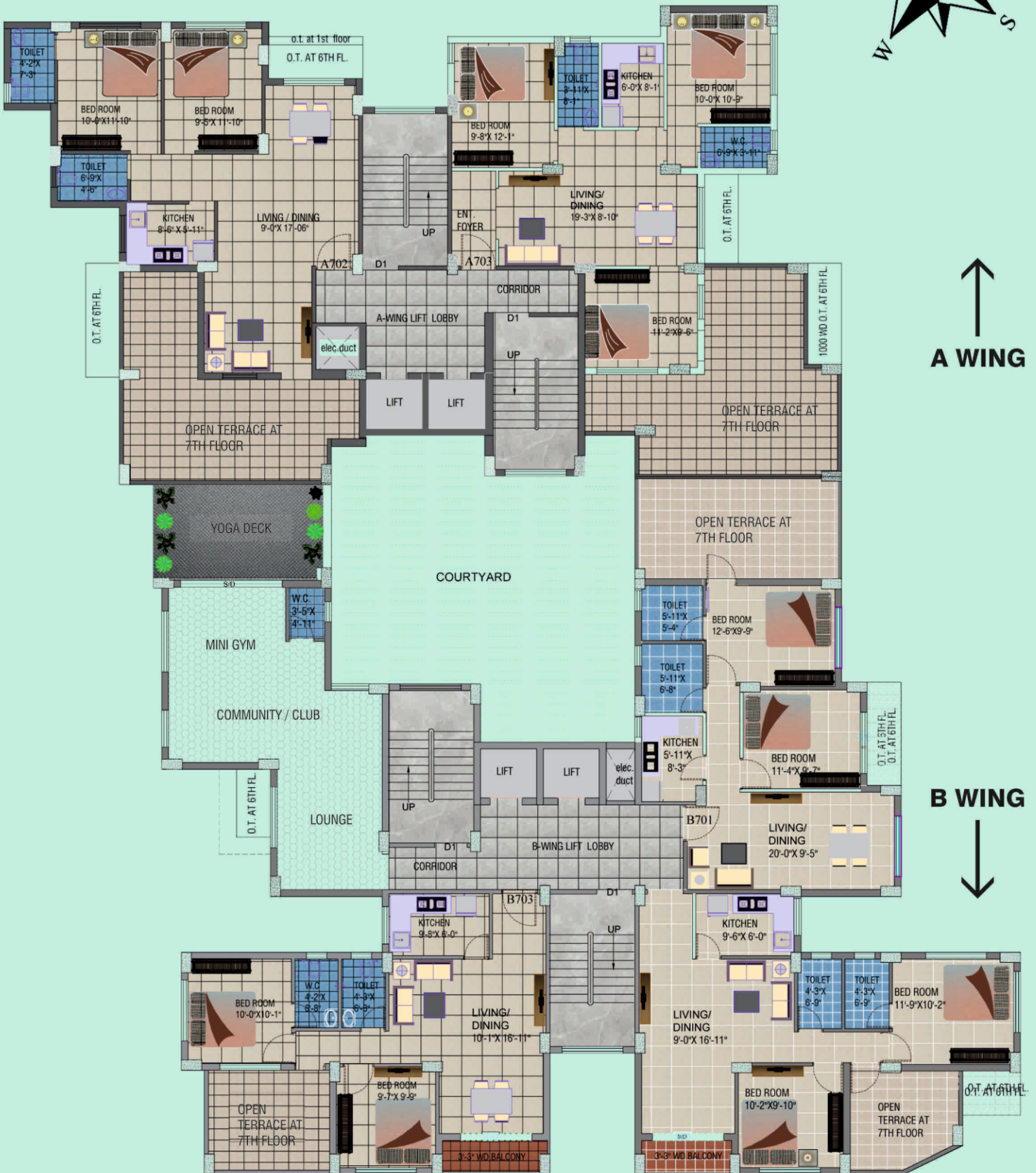
Typical Floor Plan
B 603 (6th Floor)



Typical Floor Plan
B 602 (6th Floor)



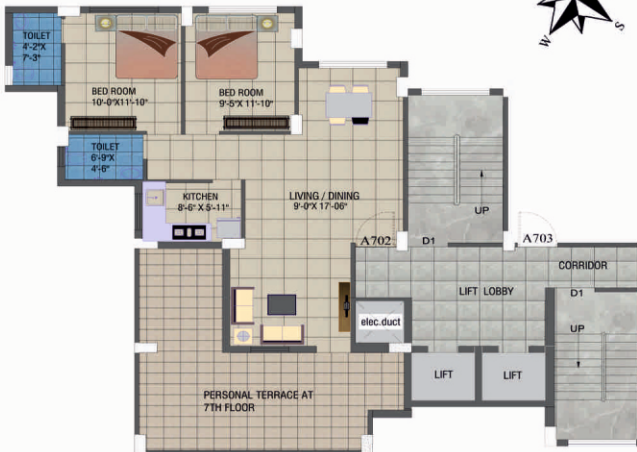
7th FLOOR LAYOUT PLAN



Perched on the 7th floor, this chic and boutique style terrace apartment offers a fine view of the city skyline and its serene surroundings.

Layout Plans For 7th Floor (A & B Wing)

Typical Floor Plan
A 702 (7th Floor)



Wing	Floor	Flat Type	Flat No.	Carpet Area	Balcony Area	Built-up Area	Maint. Chargeable Area (sqft.)	Open Terrace
A	7th Flr.	2 BHK	702	715	-	945	1276	302

Typical Floor Plan
A 703 (7th Floor)



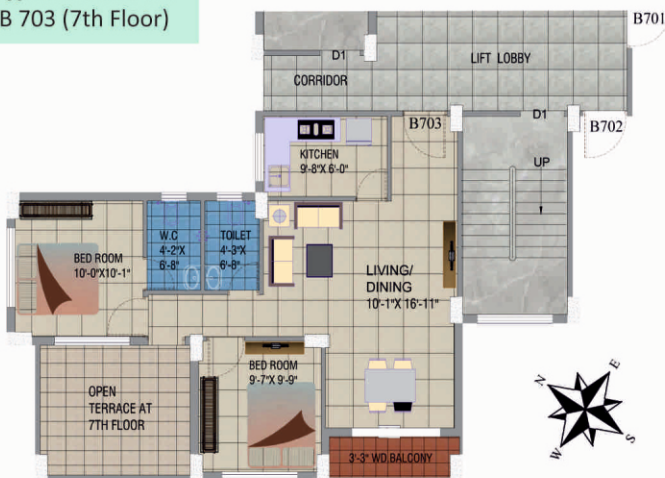
Wing	Floor	Flat Type	Flat No.	Carpet Area	Balcony Area	Built-up Area	Maint. Chargeable Area (sqft.)	Open Terrace
A	7th Flr.	3 BHK	703	735	-	983	1327	337

Typical Floor Plan
B 701 (7th Floor)



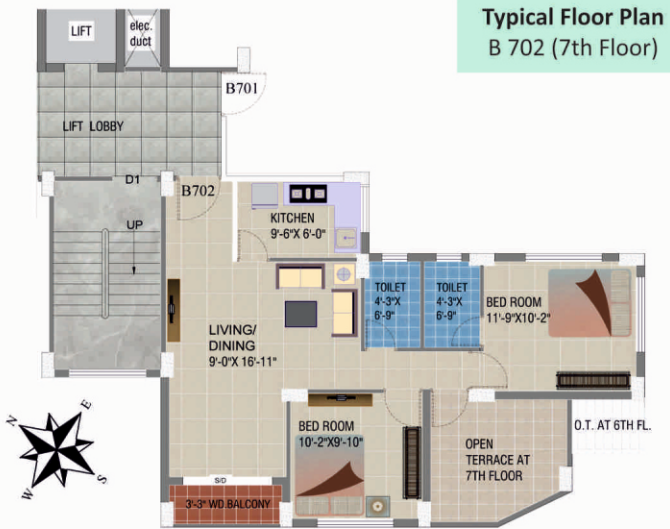
Wing	Floor	Flat Type	Flat No.	Carpet Area	Balcony Area	Built-up Area	Maint. Chargeable Area (sqft.)	Open Terrace
B	7th Flr.	2 BHK	701	591	-	755	1019	198

Typical Floor Plan
B 703 (7th Floor)

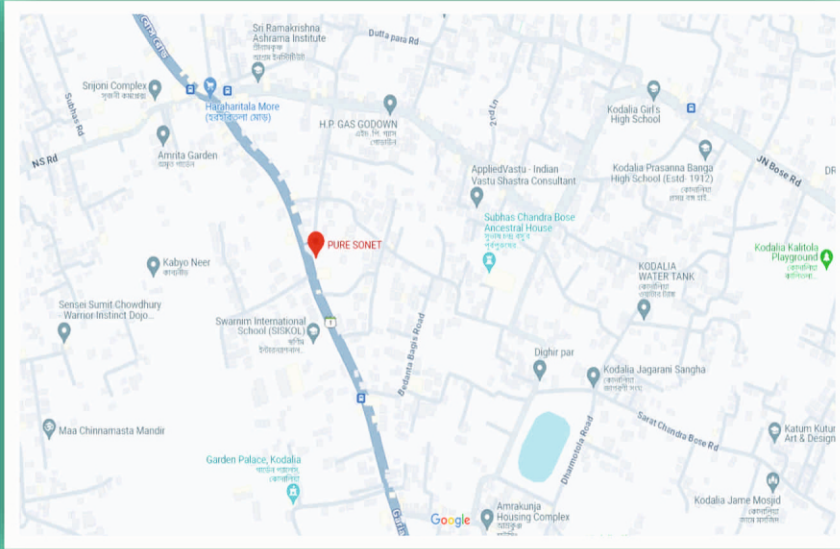


Wing	Floor	Flat Type	Flat No.	Carpet Area	Balcony Area	Built-up Area	Maint. Chargeable Area (sqft.)	Open Terrace
B	7th Flr.	2 BHK	703	612	34	780	1053	122

Typical Floor Plan
B 702 (7th Floor)



Wing	Floor	Flat Type	Flat No.	Carpet Area	Balcony Area	Built-up Area	Maint. Chargeable Area (sqft.)	Open Terrace
B	7th Flr.	2 BHK	702	627	28	783	1056	101



LANDMARKS

- Swarnim International School 0 Km
- B D M International school 6.2 Km
- Wood Square Mall 4.6 Km
- Mallikpur railway station 4.2 Km
- Garia Metro Station 7.0 Km
- Tollygunge Railway Station 16.3 Km
- Big Bazaar Hypermarket (Narendrapur) 4.7 Km



CORPORATE ADDRESS :

SRG INFINITY DEVELOPERS LLP

GF 10 -11, Ground Floor, Ozone Centre, Sector-12,
Faridabad-121007 (Haryana)

SITE OFFICE:

12, Swarnakapara, N.S.C. Bose Road, P.O. - Kodalía South 24,
Parganas South 24, Parganas, PIN - 700146.

M.: 8151-84-84-84

E-mail: sales@arttech.com

RERA No. _____

Designed & Conceptualized by :  **S RAHEJA** - MUMBAI
REALTY